



A COLLABORATIVE MODEL FOR ADDRESSING SUBSTANCE USE AMONG PREP CLIENTS

The Art of Healing: A new era in substance use prevention, harm reduction, treatment and recovery support

Presented By:
QUANG ANH MAI -MSW
SHP CLINIC
WECARE SOCIAL ENTERPRISE





The presentation includes three parts:

Introduction of participating organizations

Collaboration between an academic organization, a clinical setting, and a community-based organization.

Collaborative Model

A model for addressing substance use among PrEP clients.

Outcomes and lessons learned

Results and outcomes of the collaboration.

I. Participating Organization:

1. Sexual Health Promotion Clinic (at HMUH):

(a community and academic organization)

- Create a high-quality, friendly healthcare delivery model to deliver evidence-based interventions to serve vulnerable populations
- Become a national centre of excellence in research with MSM and TGW, conducting clinical and community-based studies on integrated health issues.
- Serve as learning sites for HMU students and provide technical support for the Ministry of Health.
- Build a collaborative network with community-based organisations (CBO) and members of the LGBTQI+ community.



SEXUAL HEALTH INTERVENTION FOR YOUNG MSM

(2012-2016),
R01DA033673 National
Institute of Drug Abuse

2012



Providing sexual health intervention for more than a thousand YMSM

HIM HANOI STUDY PEPFAR/CDC US (2016-2020)

2016



1,893 MSM participated in the study. Among them, 212 were HIV positive

LAUNCHING SHP CLINIC OF HMUH FOR PrEP PROGRAM

2019



- A part of A5 Medical Center, HMUH
- 5/2019 - 9/2019: Provided PrEP for 615 clients

ONE-STOP-SHOP CLINIC For Key Populations

2020



- PrEP, PEP, HIV testing, STIs
- SUD, CHEMSEX, and mental health
- 9/2020: Provide PrEP for 1,190 clients

BEING A PART OF DEPARTMENT OF HMUH

2024



- An important step for referring MSM clients to ARV treatment at HMUH
- Provided PrEP for over 5000 clients

WECARE SOCIAL ENTERPRISE

"a community-based and youth-led organization"



- Advocating for Comprehensive Care, Implementing Research and Community Work, and Enhancing Healthcare Inclusivity for All
- **Key Focus Areas:**



SUBSTANCE USE DISORDERS

Collaborating with Academic Agencies, healthcare facilities, CBOs and other stakeholders: Implement harm reduction and intervention through research and healthcare programs.



HIV/STIs

Promoting prevention, testing, referrals, and retention in the field of HIV.



MENTAL HEALTH

Offering Services and Resources for Mental Health Support and Well-Being: Provide comprehensive mental health care to enhance overall well-being.



LGBTQI+ HEALTH ADVOCACY

• Advocating for Equality, Inclusivity, and Access to Healthcare for LGBTQI+ Individuals: Ensure that LGBTQI+ individuals receive fair and inclusive healthcare services.

A COLLABORATIVE MODEL



Integration of SUD services into PrEP provision program

01

A collaboration between the Sexual Health Promotion Clinic (SHP clinic) and a community-based organization (WECARE) to provide a comprehensive healthcare package for underserved populations.



02

While WECARE is responsible for leading outreach and communication, SHP clinic implements the "One Stop Shop model at the clinic site.



03

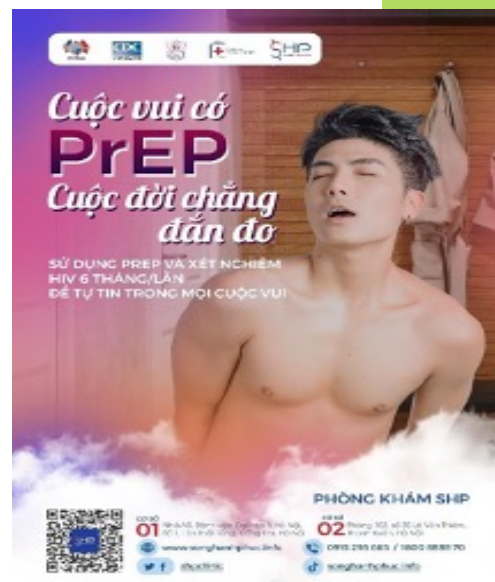
PrEP provision is the core component focusing on MSM – TG in Hanoi. The model has integrated mental health and addiction screening and intervention at the SHP clinic and community to meet the needs of underserved populations.



A COLLABORATIVE MODEL

At the Community Level, WeCare is Responsible for: Outreach and Communication:

Collaborating with Community-Based Organizations (CBOs), service providers, and social platforms to recruit individuals with sexual and mental health needs, including those dealing with substance misuse.





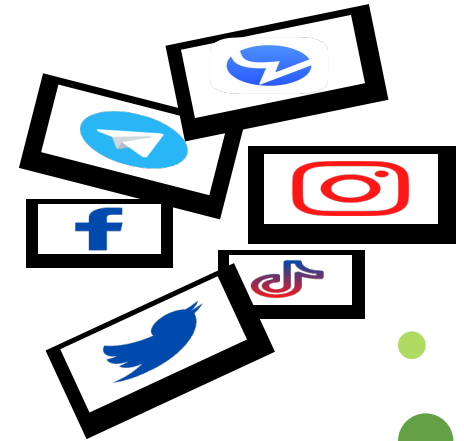
Implementing both online and offline communication strategies, creating products, events, talk shows, and TikTok campaigns. These cover diverse topics related to HIV, PrEP, mental health, sexual diversity, Chemsex, and addiction.



OUTREACH AND COMMUNICATION



- ❖ Organise community events at CBOs, universities, and the public





Community Service Provision:

Implement Mobile PrEP at CBOs and saunas to provide PrEP and interventions.

Offering services, including PrEP medication and ARV referral, addiction screening and intervention, and mental health care.





Referral to SHP and other healthcare facilities in Hanoi:

x x x
x x x



TƯ VẤN, CAN THIỆP VỀ LẠM DỤNG
CHẤT

Through diverse outreach efforts, individuals with healthcare needs will be referred to the SHP clinic and other health facilities for PrEP and other essential services.

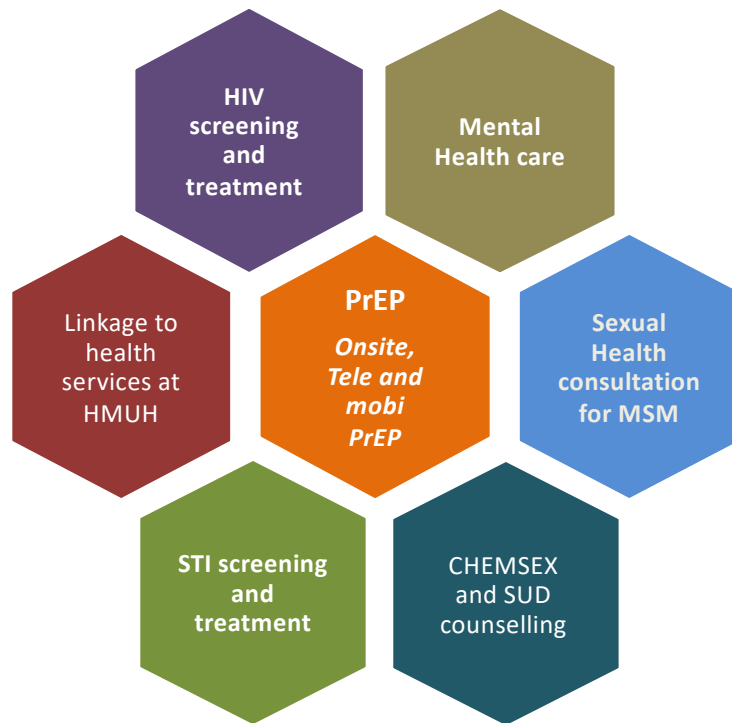
**TÔI MUỐN ĐĂNG KÝ PrEP
THÌ CẦN LÀM GÌ ?**



FRIENDLY ONE-STOP-SHOP MODEL AT THE SHP CLINIC



FULL HEALTH CARE PACKAGE FOR LGBTQI+ CLIENTS



Key characteristics:

- Qualified healthcare providers and social workers who are trained to understand LGBTQI+'s health and culture
- A strong network of community-based organizations that support outreach and feedback
- Providing clinical services at different sites (SHP, mobile PrEP at hotspots and CBO offices)

Why do we need to integrate chemsex services into PrEP program?

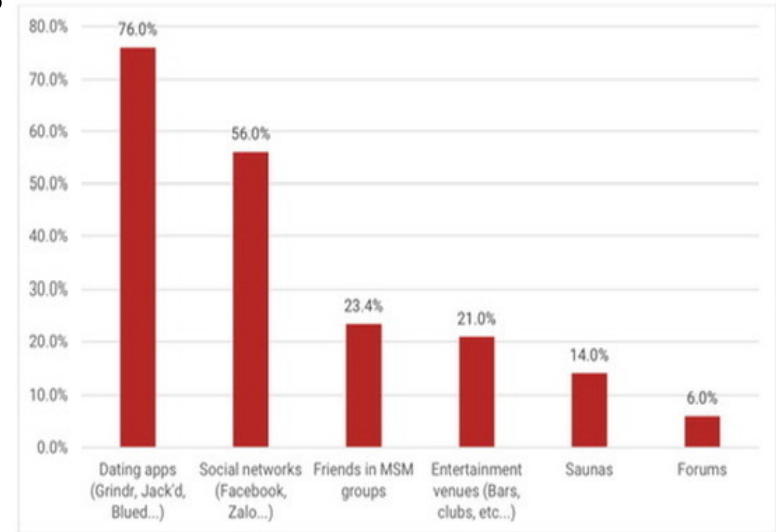
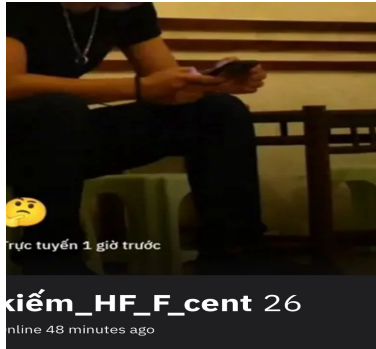


Figure 2. Where Chemsex partner(s) can be found

CHƯƠNG TRÌNH TƯ VẤN MIỄN PHÍ VỀ CHEMSEX/HIGHFUN

THS.BSNT. PHẠM THÀNH LUÂN
BÁC SĨ ĐA KHOA - CHUYÊN KHOA SỨC KHỎE TÂM THẦN

THS. TRẦN VĂN HƯỞNG
CHUYÊN VIÊN TÂM LÝ HỌC LÂM SÀNG

BẠN MUỐN TÌM HIỂU THÔNG TIN VỀ CÁC CHẤT (ĐÁ, KÈO, KÈ, NƯỚC BIẾN, CẦN SA...)

BẠN MUỐN BIẾT ẢNH HƯỞNG CỦA CHẤT LÊN CƠ THỂ

BẠN MUỐN KIỂM SOÁT AN TOÀN VIỆC SỬ DỤNG CHẤT CỦA MÌNH

BẠN NHẬN THỨC ĐƯỢC TÁC HẠI NHƯNG KHÓ KHĂN TRONG VIỆC DỪNG SỬ DỤNG CHẤT

BẠN GẶP VẤN ĐỀ SỨC KHỎE TÂM THẦN DO SỬ DỤNG CHẤT

LIÊN HỆ VỚI CHÚNG TÔI

PHÒNG KHÁM SHP | THS.BSNT. Phạm Thành Luân - SĐT: 0979.894.559

- ❖ MSM has high levels of substance use and sexual risk behaviours
- ❖ 95% of PrEP clients at SHP are MSM
- ❖ Some recent reports in Vietnam indicate that 40% to 60% of respondents experienced Chemsex



Chemsex service Intergration

Chemsex refers to the use of drugs to enhance or prolong sexual activity

1. New or reinitiated PrEP clients: will be introduced to participate in mental health and chemsex screenings as a key component of the PrEP program

2. Efficient Screening:

- Utilizes ASSIST toolkit for streamlined screening
- Identifies clients at risk of substance use and provides appropriate support

3. Brief Interventions and Referrals:

- Low-risk client -> Provide information
- Moderate-risk client -> Provide brief intervention
- Facilitates timely support and appropriate referrals for high-risk clients

notebook for chemsex/highfun

CHƯƠNG TRÌNH TƯ VẤN MIỄN PHÍ VỀ CHEMSEX/HIGHFUN

THS.BSNT. PHẠM THÀNH LUÂN
BÁC SĨ DA KHOA - CHUYÊN KHOA SỨC KHỎE TÂM THẦN

THS. TRẦN VĂN HƯƠNG
CHUYÊN VIÊN TÂM LÝ HỌC LÂM SÀNG

BẠN MUỐN TÌM HIỂU THÔNG TIN VỀ CÁC CHẤT (ĐÁ, KẼO, KE, NƯỚC BIẾN, CĂN SA...)

BẠN MUỐN BIẾT ẢNH HƯỞNG CỦA CHẤT LÊN CƠ THỂ

BẠN MUỐN KIỂM SOÁT AN TOÀN VIỆC SỬ DỤNG CHẤT CỦA MÌNH

BẠN NHẬN THỨC ĐƯỢC TÁC HẠI NHƯNG KHÓ KHĂN TRONG VIỆC DỪNG SỬ DỤNG CHẤT

BẠN GẶP VẤN ĐỀ SỨC KHỎE TÂM THẦN DO SỬ DỤNG CHẤT

LIÊN HỆ VỚI CHÚNG TÔI

PHÒNG KHÁM SHP
BỆNH VIỆN ĐẠI HỌC Y HÀ NỘI

ThS. BSNT. Phạm Thành Luân - SĐT: 0979.894.339
ThS. Trần Văn Hương - SĐT: 098.3658.787

Chemsex /Highfun
Những điều cần biết



Technical support from CREATA-H

Comprehensive Technical Support:

- ❖ Offered by the Center for Training and Research on Substance Abuse - HIV, Hanoi Medical University

Key Components:

- ❖ Training on SBIRT framework and ATS screening procedures
- ❖ On going guidance and supervision for effective implementation
- ❖ Access to resources and expertise for addressing complex cases

Support

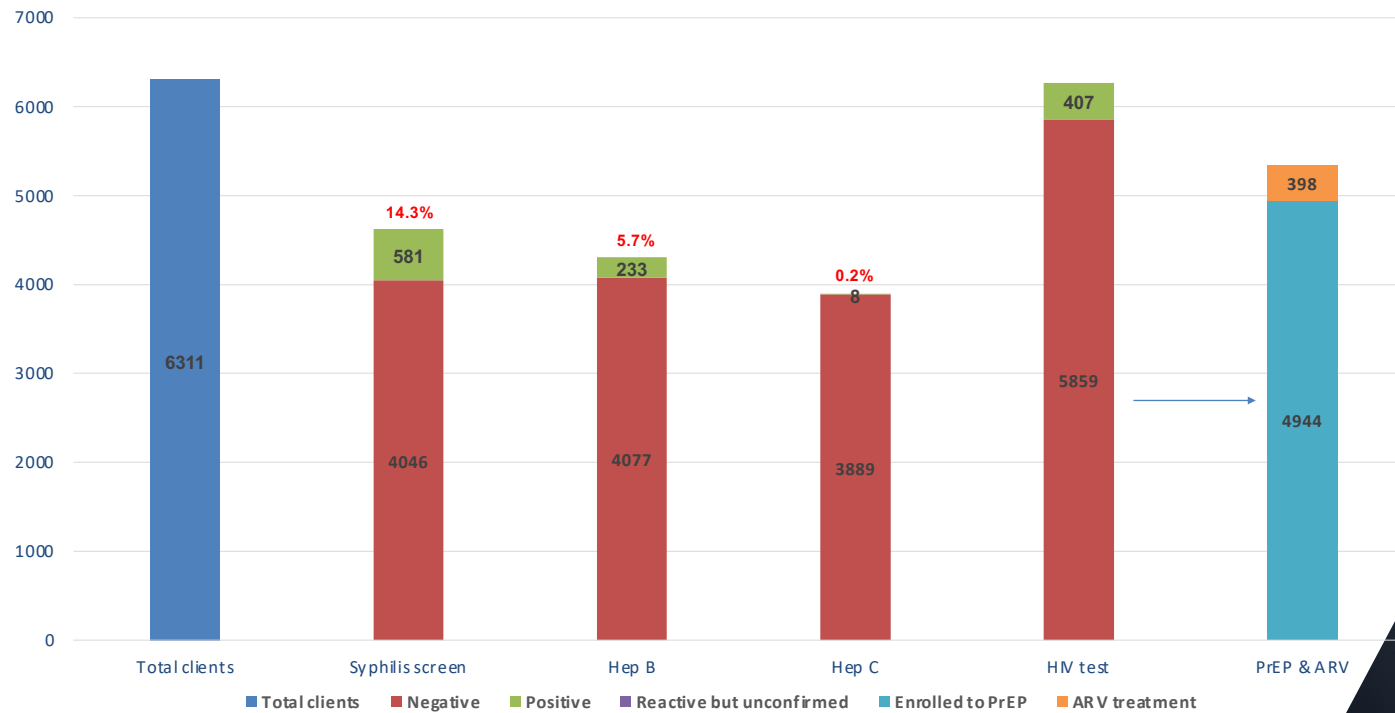
- ❖ This support ensures the successful implementation of the intervention process, promotes standardised practices and improves outcomes for PrEP clients.

IMPACT ON PrEP PROGRAM



OUTCOMES OF THE MODEL:

OSS in SHP clinic (5/2019 - 12/2023)



IMPACT ON PrEP PROGRAM

OUTCOMES OF THE MODEL:

The data was collected at both the
Community site and SHP clinic



IN 2023,
WECARE
Successfully
connected 960
new PrEP
clients to PrEP
program



45,3 % clients
underwent
Screening
(ATS) at both
community
and clinic sites



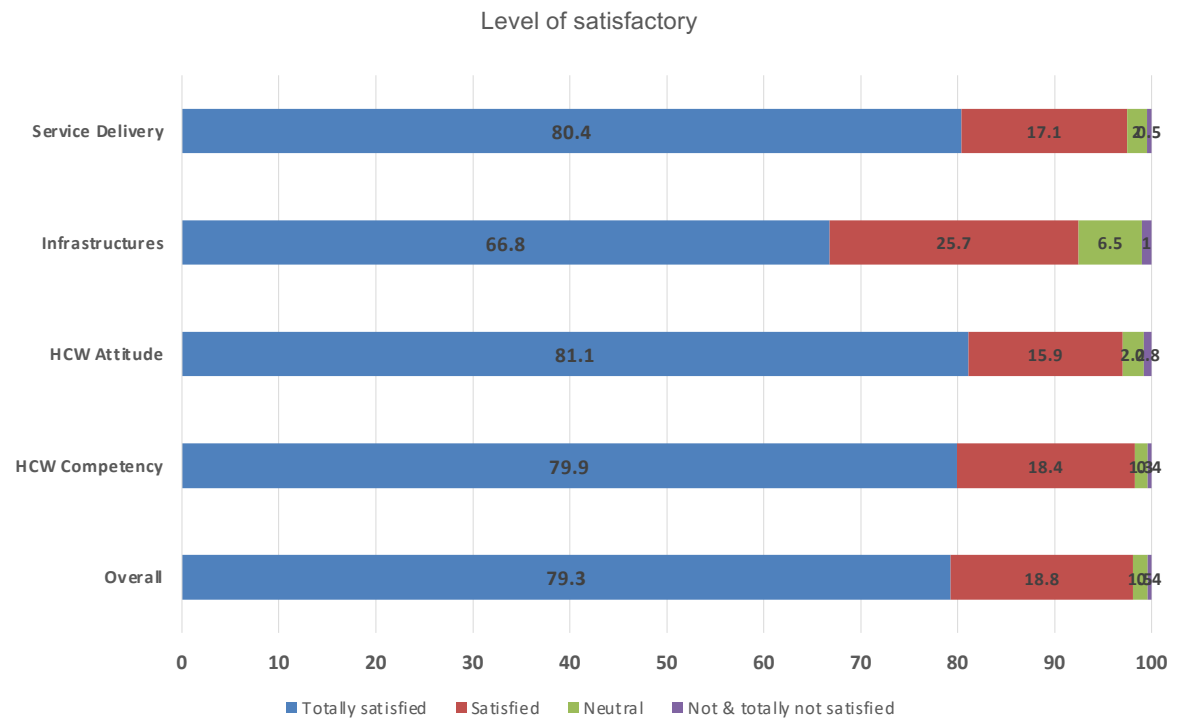
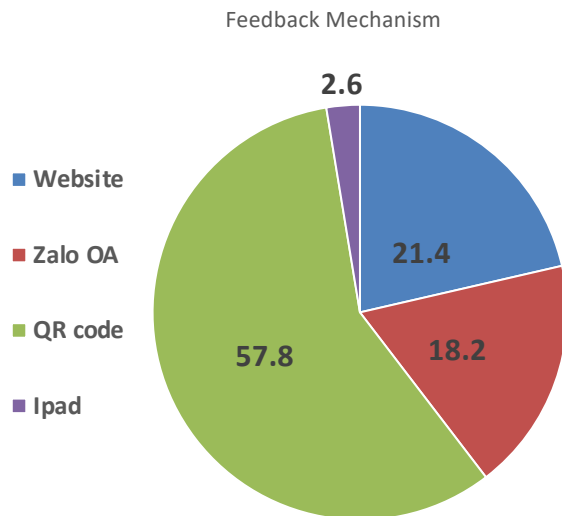
34,9% disclosed
experiences with
substance use ,
including alcohol
and synthetic
drugs and referred
to received
intervention



5,9% received
specialized
treatment for
methamphetamine
and stimulant
misuse



Clients' satisfaction feedback for Continuous Quality Improvement (n=2371)



LESSONS LEARNED



What do we hope for the future?

Replicate our model to other healthcare facilities in Vietnam for more significant impacts on both HIV and addiction.

1

Holistic Care Integration:

Recognising the interconnectedness of health issues and the need for holistic care is vital. Addressing substance use, mental health, and sexual health in an integrated manner provides better outcomes for clients.

2

Partnership and Collaboration:

Collaboration with diverse stakeholders strengthens impact and sustainability.

3

Integrated Screening and Intervention:

Integrating substance use and mental health screenings into the PrEP program allows for early identification and timely intervention for clients at risk

4

Continuous Learning and Evaluation:

Importance of ongoing monitoring, evaluation, and learning.



 Website
www.realtvareatsite.com

 MSW
quanganh@wecare.org.vn

 Phone Number
+84 979633314

 Email
doanhnghiepaxahoiwecare@gmail.com

